



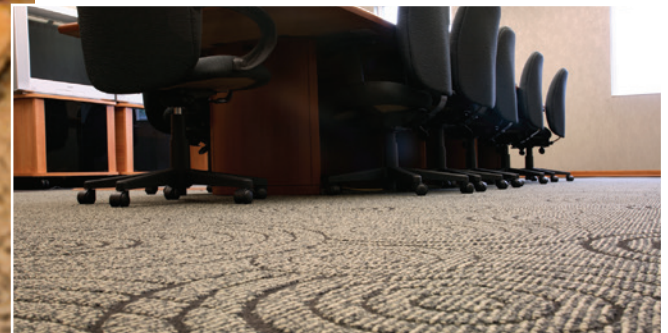
# Control Foam Residue Left in Carpets from Previous Cleaning

Use **Liquid Defoamer** with extraction cleaning carpets that have been shampooed, foam cleaned, or bonnet-maintained excessively, to help eliminate foam build-up left in carpeting from excess cleaning detergents. **Liquid Defoamer** is easily dispersed in hot or cold water, and can be lightly sprayed on the carpet before cleaning, or added to the recovery tank.

**Liquid Defoamer** will help protect extraction vacuum motors by reducing excessive foam to liquid more quickly.

## Key Features of Liquid Defoamer

- Eliminates foam build-up from previous cleaning
- Saves labor and time



# Liquid Defoamer Treatment



## Liquid Defoamer Treatment

**Quart** 6/case

**C276-009**

**Gallon** 4/case

**C276-005**

Also available in 55 gallon drum  
Diluted pH 6.5-7

### **DIRECTIONS:** Shake well before using.

Test fabric in inconspicuous place for color fastness before using.

Dilute 1 part Defoamer to 7 parts water (4 oz. Defoamer plus water to 1 quart). Should be prepared, carried and used by your cleaning crew.

### **IN THE VACUUM TANK:**

Defoamer is best used in the vacuum tank. Start with 1 oz. (30 mL) of diluted Defoamer for a 5 gallon tank. More may be added as needed. Properly used Defoamer adds dimensions to your vacuum tank to permit full use of the extraction process.

### **IN THE CLEANING SOLUTION:**

When the carpet has heavy shampoo residue, diluted Defoamer may also be added to the cleaning solution. Try 1 oz. (30 mL) per 5 gallon (18.9 L) of solution.

**Note:** Defoamer in the solution tank might cause clogging of some equipment filters.

### **AS A SPRAY:**

When the carpet has a heavy shampoo residue, diluted Defoamer may also be sprayed on the carpet before cleaning. Mix 1 oz. (30 mL) of diluted Defoamer and dilute that further with water to 1 quart (946 mL). Spray this very sparingly to cover at least 200 square feet.

**NOTE:** Freezing will not affect cleaning power. Thaw, shake well and use.

