



## The perfect low moisture cleaning method for heavy traffic areas



Sprinkle **Dri-Way+®** Compound generously over a 5' x 5' carpeted area to be cleaned.



Agitate with a Dri-Way Jr. machine using a back and forth and crosswise motion working the compound into the carpet nap.



Allow area to dry while proceeding with another 5 ft. x 5 ft. area. Vacuum entire carpet with brush type upright vacuum.

**Dri-Way+®** Compound coverage is 550-650 square feet per 5 lb., depending on the type of carpet

5 lb. Bag - **C260-005** / 2 cs. 22 lb. Container - **C260-003** / each

**Dri-Way+®** Cleaning Compound is a great way to keep carpet looking fresh and clean. **Dri-Way+®** can be used as an interim cleaning method between wet restorative cleanings or can be used as a stand-alone program, for facilities that prefer to use low moisture methods. Carpeting subjected to heavy traffic can be kept looking good year-round without using methods requiring extensive drying time and labor costs.

# Dri-Way+®

## Dry Carpet Cleaning Compound

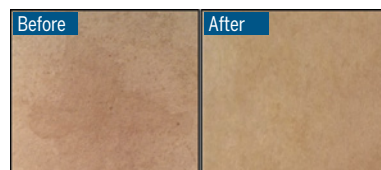
### KEY BENEFITS:

- ✦ Completely biodegradable, over 80% naturally derived
- ✦ Made of sustainable ingredients

### NEW ADDED FEATURES:

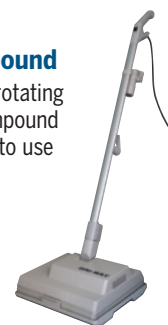
- ✦ Requires less dwell time, and less mechanical action
- ✦ Contains a citrus terpene surfactant (Chemistry behind this surfactant that won a Nobel Prize)
- ✦ Contains encapsulating technology (Carpets stay cleaner longer)
- ✦ Cleans without excess residue
- ✦ Anti-soiling properties
- ✦ Contains hydrogen peroxide (For an extra cleaning boost)

- Fast, Easy Cleaning
- Dries Immediately
- No "SOIL WICKING"
- No Carpet Downtime



### How Do I Apply the Dri-Way+® Compound

Our **Dri-Way Jr.** machines twin, counter rotating brushes will gently work the **Dri-Way+®** Compound into the carpet fibers. The process is so easy to use and takes little time to apply.



**hospeco**  
BRANDS GROUP

P: 800.942.9199 F: 216.279.0019 [www.hospecobrands.com](http://www.hospecobrands.com)